

GC 3

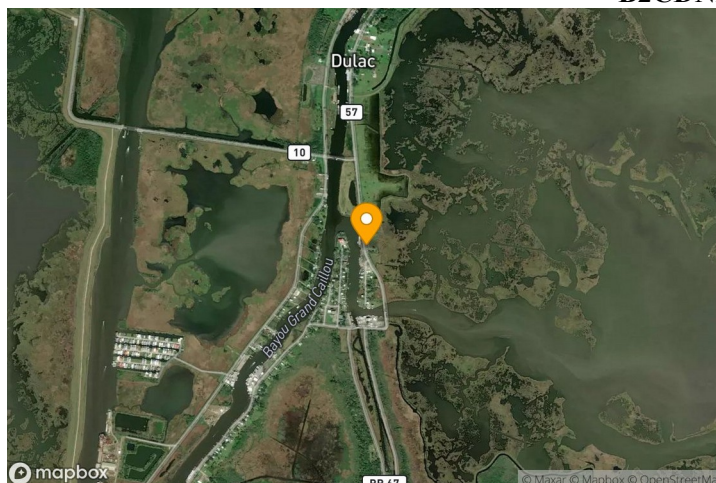
Benchmark Datasheet

CEMVD / CEMVN

Last Updated 09/23/2025 18:20 by

B2CDNAJC

Name GC 3
PID AH6332
Stamping GC-3 1993
Setting Type 7 - Set In Top Of Concrete Monument
Marker Type DD - Survey Disk
Stability C - May Hold, But Of Type Commonly Subject To Moving
Rod Length
Projection Length
Magnetic No
Parish Terrebonne
State Louisiana



Description

DESCRIBED BY GULF SOUTH ENGINEERS INCORPORATED 1993 (TWR) MONUMENT IS LOCATED SOUTH OF THE CITY OF HOUMA JUST OUTSIDE OF THE RIGHT-OF-WAY OF LA. HIGHWAY 57, (TOWNSHIP 19 SOUTH RANGE 17 EAST SECTION 87). MONUMENT IS A TERREBONNE PARISH LIS DISK SET IN CONCRETE AND IS FLUSH WITH THE GROUND. MONUMENT IS ABOUT 0.38 MI (0.61 KM) SOUTH OF THE INTERSECTION OF FALGOUT CANAL ROAD AND LA. HIGHWAY 57, 40.95 FT (12.48 M) EAST OF THE CENTERLINE OF LA. HIGHWAY 57, 102.47 FT (31.23 M) SOUTHEAST OF A UTILITY POLE WITH A NAIL/SHINER AND TWO TELEPHONE PEDESTALS (SW 36 AND SW 36-1), 96.15 FT (29.31 M) SOUTH OF AN ABANDONED TIN BUILDING, 5.2 FT (1.6 M) WEST OF A CONCRETE SLAB, 18.2 FT (5.5 M) NORTH OF A SHELL DRIVEWAY.

Horizontal Attributes

Datum	Epoch	Northing	Easting	Latitude	Longitude	Accuracy	Derivation	Published Date	Superseded Date
NAD83	NA2011	319,554.96 ft	3,478,412.3 ft	29°22'38.01752	-90°42'46.81556	.05 ft	ADJUSTED	03/26/2019	

Vertical Attributes

Datum	Epoch	Geoid	Elevation	Accuracy	Derivation	Published Date	Superseded Date
NAVD88	2009.55-16	GEOID18	2.62 ft	.10 ft	GPS OBS	10/12/2022	
NAVD88	2009.55	GEOID12A	2.85 ft	.10 ft	GPS OBS	02/21/2013	
NAVD88	OPUS	GEOID12B	2.73 ft	.10 ft	GPS OBS	04/24/2019	

Latest Benchmark Recovery Note

Condition	Recovered On	Job Number	Org Recovered By	Day Defined?	Month Defined?	Satellite Suitable?	Description	Last Updated By
GOOD	06/03/2006 00:00		National Geodetic Survey	Y	Y			05/26/2022 08:28 -

CEMVD / CEMVN
GC 3

Last Updated 09/23/2025 18:20

IBBISS
Page 1 of 5

								MVDGIS
--	--	--	--	--	--	--	--	--------

Site Photos



Side View (Unspecified)

GC 3, AH6332, 3, 20160620



Side View (Looking East)

GC 3, AH6332, 3E, 20100925



GC 3, AH6332, 3N, 20061012

Side View (Looking North)



GC 3, AH6332, 3N, 20081112

Side View (Looking North)



GC 3, AH6332, 1, 20081112

Monument Top View